

# Heal the Earth.

## The Reality of Deforestation and What You Can Do



Malinda  
2021

### **Deforestation**

Deforestation is the clearance or removal of trees in forests.

Most trees that are cut down in the process of deforestation are removed to create space for farms, pastures, to harvest timber, and to build roads and houses.

In 2020 alone, 12 million hectares of tropical tree cover was lost.



Since the 1600s, The United States has destroyed nearly 75% of all its virgin forests.

### **Causes**

Palm-oil plantations, cattle ranches and soybean plantations account for over 60% of tropical deforestation.

Deforestation is also caused by:

- Wildfires
- Unsustainable Logging
- Population Growth

### **The Effects**



Deforestation causes droughts, forest fires and climate change.

Deforestation also causes:

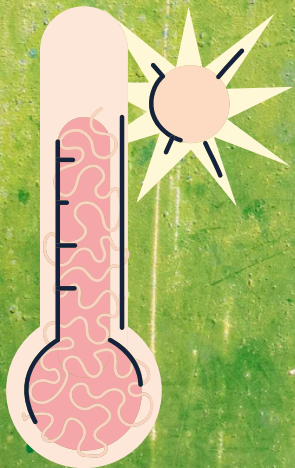
- Increased Carbon Dioxide Emissions
- Disruption of Water Cycles
- Increased Soil Erosion
- Disrupted Livelihoods
- Fire-prone Conditions

## Outlook

It is estimated that by 2030, there may only be 20% of the world's rainforests left.

In the Amazon Rainforest, it is predicted that by 2050, temperatures will increase by 3.6 - 5.4 degrees Fahrenheit.

Mass extinction across global biodiversity will occur if deforestation continues.



## What You Can Do

Even at home there are many things that you could do to help reduce deforestation.

Some of those include:

- Avoid Single Use Packaging
- Eat Sustainable Food
- Choose Recycled Products or Wood Products that were Responsibly Produced
- Reuse, Reduce and Recycle!
- Plant a Tree Where You Can
- Raise Awareness in Your Community or With People Close to You!



## Fun Fact



Did you know that 51,000 trees are cut down everyday just to provide North America with paper towels?

### **For More Information:**

- <<https://www.worldwildlife.org/threats/deforestation-and-forest-degradation>>
- <[greenpeace.org/usa/forests/solutions-to-deforestation](https://greenpeace.org/usa/forests/solutions-to-deforestation)>
- <<https://mynasadata.larc.nasa.gov/basic-page/deforestation>>
- <[https://wwf.panda.org/wwf\\_news/?245370/Over-80-of-future-deforestation-confined-to-just-11-places](https://wwf.panda.org/wwf_news/?245370/Over-80-of-future-deforestation-confined-to-just-11-places)>
- <<https://www.pnas.org/content/114/23/5775>>

